



inVirtus
TECHNOLOGIES

SUMMARY

- About inVirtus Technologies
- An end-to-end solution : Hardware, Software & Connectivity
- Medical use case ; Indoor geolocation : Anchors & Beacons
- Medical use case ; Outdoor geolocation : Trackers
- inVirtus Cloud
- inVirtus App
- Benefits
- What's next



Who we are

Developer and integrator of IoT solutions
dedicated to indoor & outdoor Asset Tracking.

End-to-end turnkey solution

- 1- Tracking device
- 2- open and scalable supervision software suite.

Sectors :



Founded in 2018,
20p, Nantes
Expert of indoor & outdoor
All in 1 partner : Hw & Sw
+25.000 connected objects
Made in France

They trust us :

THALES

CHANTIERS
DE L'ATLANTIQUE

Novatech
Technologies

ALSTOM

NAVAL
GROUP

AIRBUS



LA POSTE

ENGIE

SNCF

naotic
technologies utiles



VOLVO TRUCKS

stryker
A Global Leader in Medical Technology

Gifi
des idées de Génie !

IDEA
GROUPE

Issues addressed :

You receive a large number of bio-medical asset in your facility, and they follow a large number of possible routes through several types of areas (e.g., reception, room, anesthesia, operating room, recovery room, cafeteria, etc.).

Lost assets

- Waste of time searching
- Unnecessary investments

Furthermore, you are not able to customize service offerings based on the area where the patient/carers is located.

Low visibility on patients/carers

- Change of itinerary
- Loss of time to guide the patient in his journey, to answer the requests of his relatives.



inVirtus : an end-to-end solution

inVirtus is one of the few market players offering a complete solution : hardware, software, connectivity, and integration to customers' systems



Indoor geolocation : Multi-site logistics

Objective : Monitoring of medical asset in hospitals

ivScan

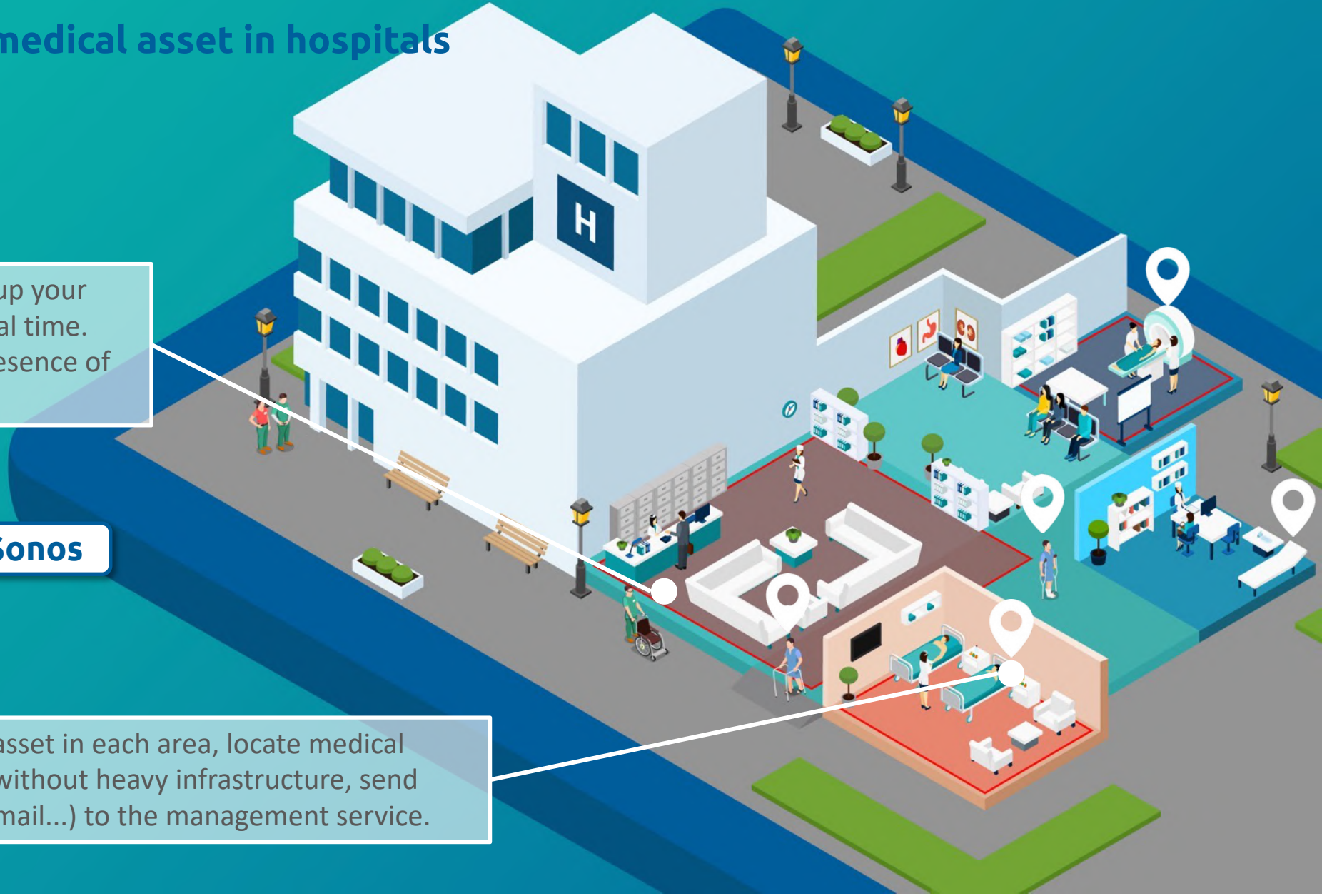


Generate zones allowing you to set up your asset and transmit information in real time. They allow you to alert in case of presence of an unauthorized asset in a zone.



ivBeacon Sonos

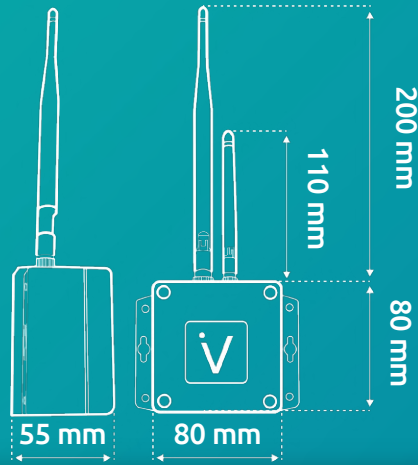
Measure the time spent by each asset in each area, locate medical equipment precisely in real time without heavy infrastructure, send notifications (SMS, mobile app, email...) to the management service.



Indoor Geolocation : Create zones up to 50m with inVirtus Anchors

Weight : 288g
Battery life : 10 years
Communication protocole : MQTTs
LORAWAN class A : 868 Mhz
BLE / LoRa antenna : Omnidirectionnal
Advantages :

- IP67
- Temperature : -40°C / +85°C



Up to 10 years
autonomy



Scanning :
1 200 beacons

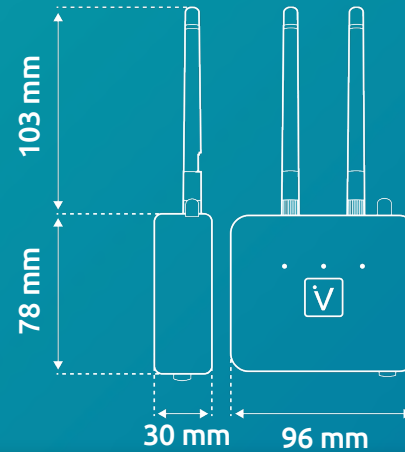


No wire
required



Scope range
Up to 100 m

ivScan Athena



Weight : 122g
Set-up : Automatic
Power Supply : DC 5V, Micro-USB, PoE
Communication protocole : MQTTs
LORAWAN Class A : Omnidirectionnal
Advantages :

- Ethernet / Wifi connexion
- Temperature : -30°C / +70°C



Scanning :
10 000 tags per scan



Connectivity :
Ethernet / WiFi



Plug & Play



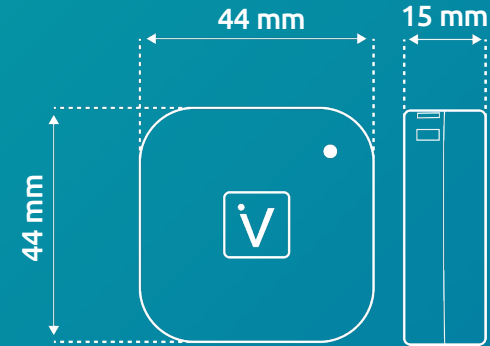
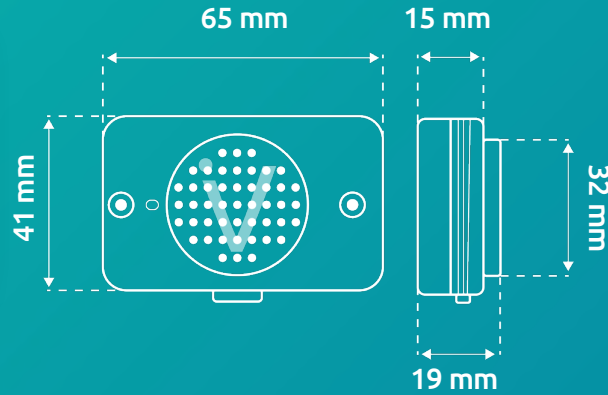
Scope range
Up to 400 m

ivScan Chronos

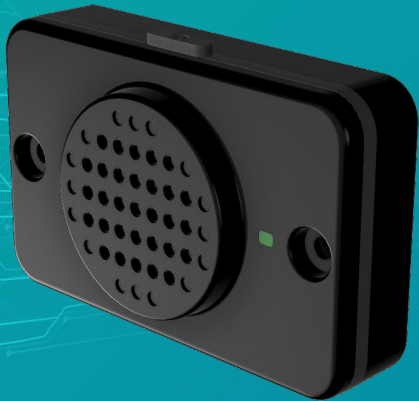


Indoor Geolocation : Track your assets with inVirtus beacons





Bluetooth : BLE 5.3
Casing : Polycarbonate
Weight : 18g
Button / LED : On / Off
Scope : Up to 120m
Battery : LiMnO2







Bluetooth : BLE 5.3
Casing : Polycarbonate
Weight : 13g
Configurable LED : On / Off, Alarm...
Scope : Up to 120m
Battery : CR2477, 1000 mAh, 3V



ivBeacon Sonos

-  **Battery Life**
Up to 6 years
-  **BLE**
Bluetooth Low Energy
-  **Buzzer**
100 dB
-  **Temperature**
-40°C / +60°C

-  **Battery Life :**
Up to 10 years
-  **BLE**
Bluetooth Low Energy
-  **IP67 Waterproof**
-  **Temperature**
-40°C / +85°C



ivBeacon Lite

Outdoor / Indoor : Follow-up of biomedical asset, on and off site.

Objective : Traceability of health asset

Equip your asset with an ivTrack GPS tracker. You can then locate them in real time via the inVirtus Cloud for PC and the android mobile app.



ivBeacon Lite

BLE tag installed on each asset.
It allows to be scanned by the Tracker when entering/leaving your site.

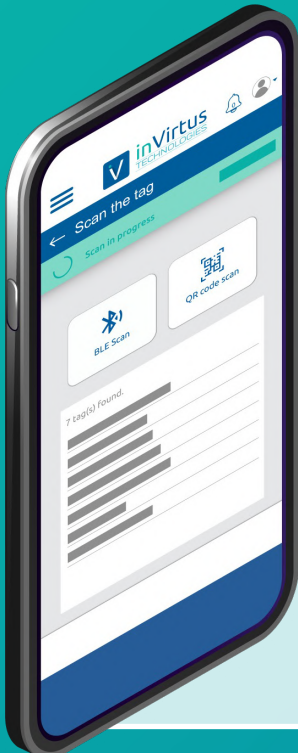
ivTrack Evo



Fixed on each medical bed.
Scan your asset in real time.

Benefits :

- Measure the time of use or the distance covered by the asset
- Optimize maintenance operations
- Locate precisely and without heavy infrastructure in real time
- Be alerted in case of unforeseen zone change...



Outdoor (+Indoor) Geolocation : track your assets with GPS(+BLE) ivTrack Evo

ivTrack Evo



Battery life :
Up to 10 years



Functioning Temperature :
-40°C / +85°C



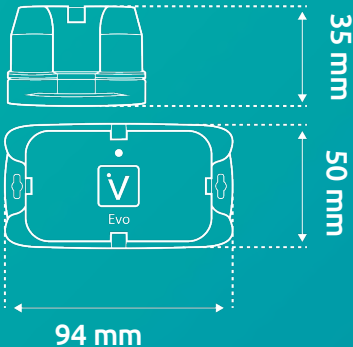
Shock-resistant
IK09



Waterproof
IP68



Anti-Vandalism



Install
Plug & Play and World Wide

Hybrid technologies
Smart GSM (2G, LTE-M, NB IoT)

Omni-directional GNSS
Accuracy < 5 m*

Multi-GNSS fix mod
Normal, Dynamic, S&S

BLE Bi directional
BLE Transmitter & Receiver

Data recovery
160 GNSS fixes in memory

Configurable indicator
Activation of the LED following an event
(e.g.: maintenance date reached, last
phase of the OF validated...)



- 3D accelerometer
- Buzzer
- Temperature sensor
- Remotely configurable
- Color panel

13



* in optimal conditions

Outdoor (+Indoor) Geolocation : Suitable for installation in constrained environments

ivTrack Nano



Battery life :
5 years with 2 localization / day



Functioning Temperature :
-40°C / +85°C



Shock-resistant
IK09



Waterproof
IP66



Anti-Vandalism

Install
Plug & Play and World Wide

Multi-GNSS fix mod
GPS, GLONASS, Galileo & QZSS

BLE Bi directional
BLE Transmitter & Receiver

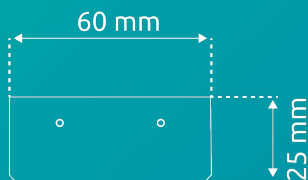
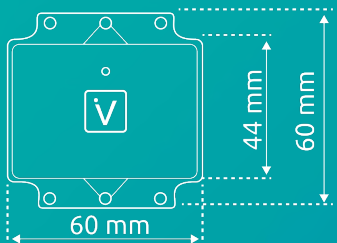
Hybrid technologies
Smart GSM (2G, LTE-M, NB IoT)

Data recovery
160 GNSS fixes in memory

Configurable indicator
Activation of the LED following an event
(e.g.: maintenance date reached, last
phase of the OF validated...)

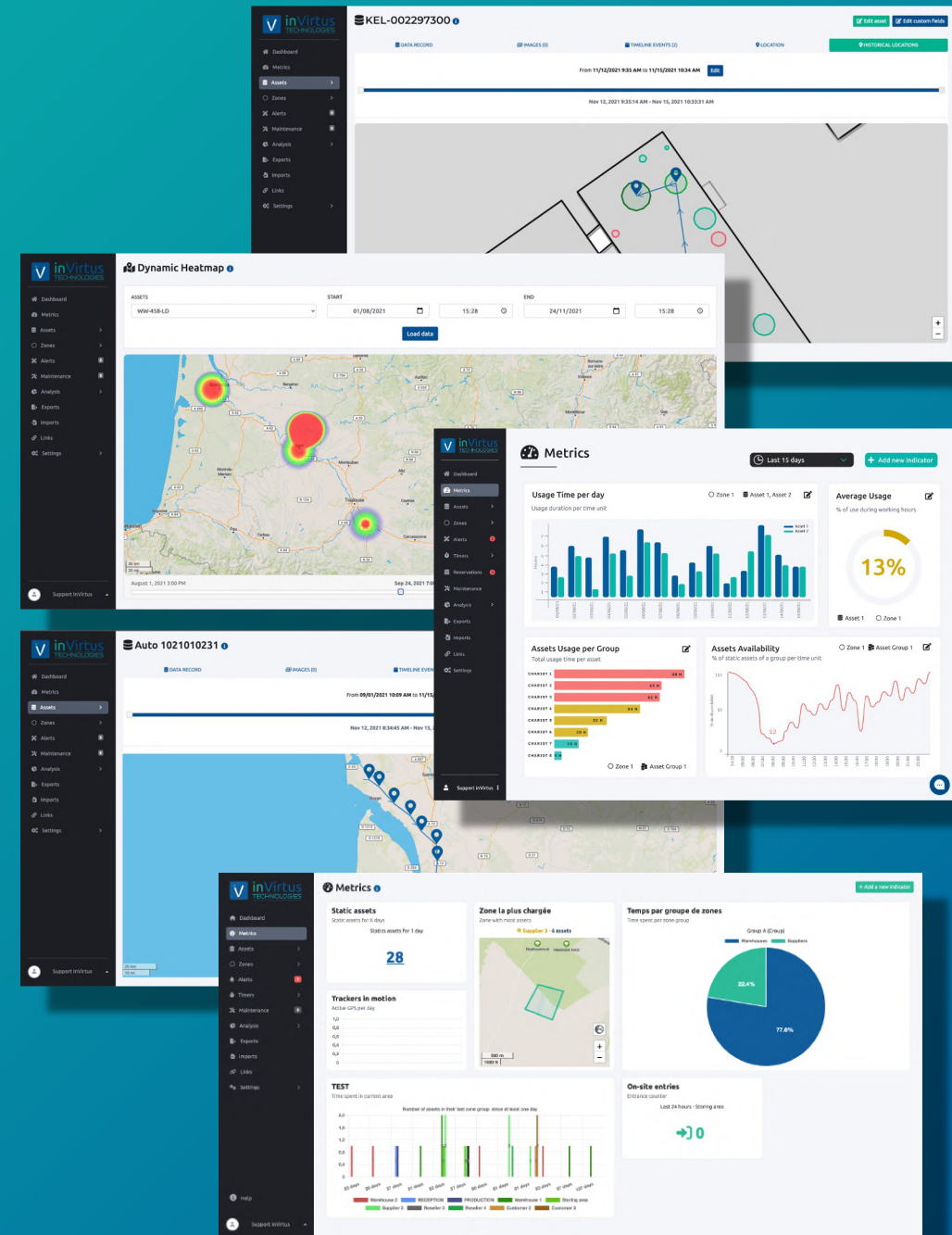


- 3D accelerometer
- Buzzer
- Temperature sensor
- Remotely configurable
- Color panel



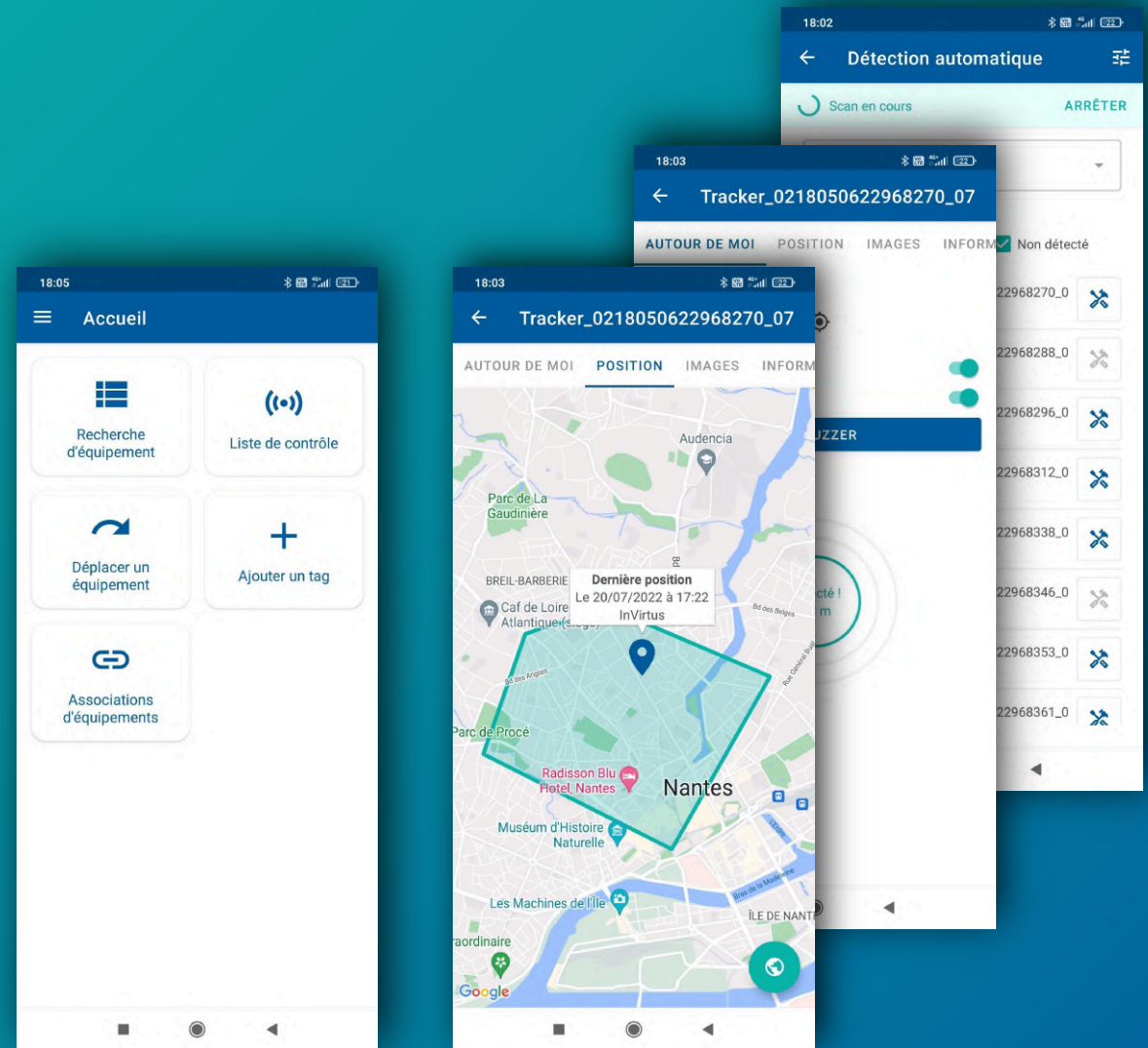
inVirtus cloud platform

- Locate immediately what you look for
- Achieve frequent, precise multi-zone inventories
- Create geofencing zones
- Set up alerts and be informed in case of unexpected events
- Retrace movements history
- Compare theoretic / real tack times
- Analyse rotations and identify bottlenecks
- Improve production flows, equipment allocation
- Optimize tool maintenance
- Choose your own indicator dashboard
- Push geolocation data to your own system (ERP, WMS...)



inVirtus Android App

- Pair / unpair asset to a beacon
- Locate immediately your asset
- Know your distance with the asset
- Activate the beacon LED / buzzer
- Edit the asset informations



inVirtus Solution : Benefits

Seamless Indoor & Outdoor
geolocation

1 single partner for a complete,
simple and reliable solution

Easy integration with ERP and
other 3rd-party systems

Expertise in Asset and Production
Order Tracking, with process
optimization features

Easy plug & play installation :
costly infrastructure required

Evolutive and innovative solution
(Tag buzzer, solar panel, software
monthly releases, ...)



On-premise installation for
highest data protection

What's next ?

MEETING / VISIO /
DEMO

STARTER KIT

PoC

GO

MAINTENANCE

Let's meet for
more information



inVirtus offers 2
starter kits
(indoor /
outdoor) for test
purposes



A premium « starter
kit » tailored to
your needs, and the
support of a project
manager for set-up
and training



Full deployment



inVirtus offers
Long term
support for
mainteant, data
analyses and
process
optimization



THANKS FOR YOUR ATTENTION



To stay in touch : Emmanuel Vertongen

Mail: emmanuel.vertongen@invirtus.io

Tel : +33 (0)7 68 72 21 36



inVirtus
TECHNOLOGIES

Switch to medical activity 4.0

THANKS FOR YOUR ATTENTION



To stay in touch :

Frédéric BELHACHE

Mail : frederic@invirtus.io

Tel : +33 (0)6 07 03 28 61



Switch to medical activity 4.0

THANKS FOR YOUR ATTENTION



To stay in touch :

Raphaël PANTAIS

Mail : raphael@invirtus.io

Tel : +33 (0)6 47 43 96 95



Switch to medical activity 4.0